

# Specification List of RL Series

## LIST OF SPECIFICATION

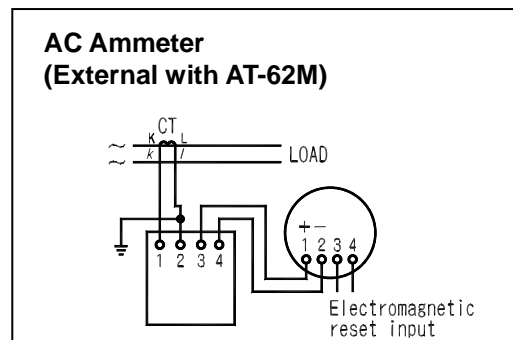
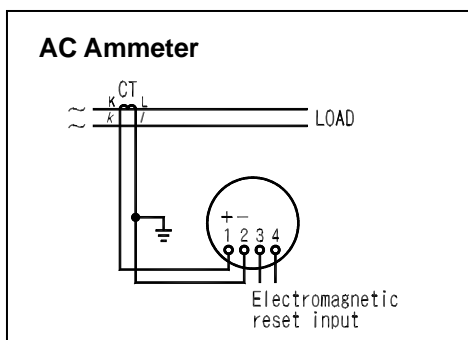
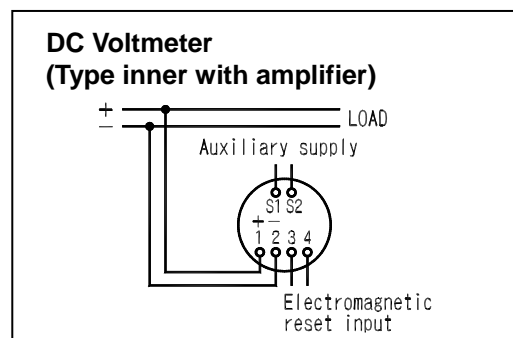
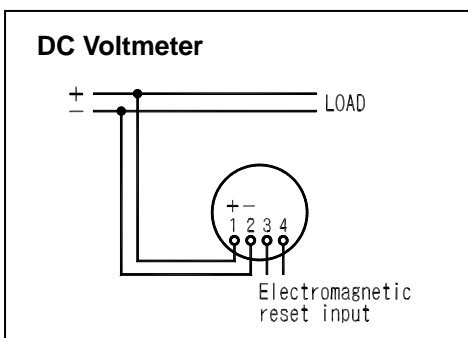
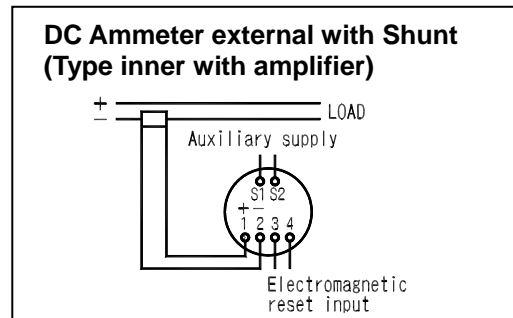
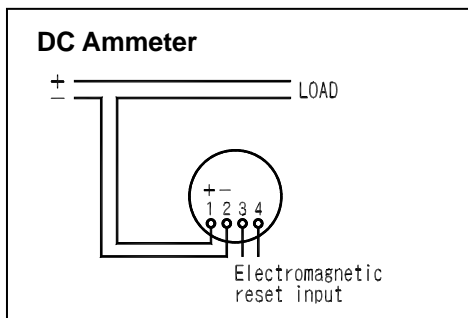
Product	Model	Max. Input & Rated	Consumption VA & Internal Resistance		Response time (sec)		Attached Transducer	Notes
			Voltage	Current	L-110C	L-80C		
DC Ammeter	MRL-110C□	20mA	—	below 500Ω	0.2	0.15	—	MRL-80CHL response time: 0.2 sec. only
	MRL-80C□	50mA	—	500Ω		0.2		
	MTRL-110□, 80C□	100μA~10A	—	60mV	0.2	0.15,0.2	—	Specify aux. power AC100V or AC200V
DC Voltmeter	MRL-110C□, 80C□	15V~300V	20mA	—	0.2	0.15,0.2	—	MRL-80CHL response time: 0.2 sec. only
	MTRL-110C□,80C□	60mV~200mV 500mV~14V	1kΩ 10kΩ	—	0.2	0.15,0.2	—	Specify aux. power AC100V or AC200V
AC Ammeter	CRL-110C□ CRL-80C□ *1	1A~10A	—	below 6VA	0.1, 0.15, 0.2 0.5~30		*1 —	*1) CRL-80 response time: 0.1, external AT-62M, response time: 1~15, external MR-CTN 80 degree: below 15 sec
AC Voltmeter	CRL-110C□ CRL-80C□ *2	100~300V	below 6VA	—	0.1, 0.15, 0.2 0.5~30		*2 —	*2) CRL-80 response time: 0.1,1~15, external VT-62M, 80 angle: below 15 sec. 0.15~0.5 sec. external DH-41 (Except Vo Meter)
DC Receiving Indicator	XRL-110C□	20mA	—	below 500Ω	0.2	0.15,0.2	—	XRL-80CHL response time: 0.2 sec only.
	XRL-80C□	50mA	—	500Ω				
	XRL-110C□ XRL-80C□	15V~300V	20mA	—	0.2	0.15, 0.2		
AC Receiving Indicator	YRL-110C□ YRL-80C□	1A~10A	—	below 6VA	0.1, 0.15, 0.2 0.5~30		*3 —	*3) YRL-80 response time: 0.1, external AT-62M, response time: 1~15, external MR-CTN, 80 degree: below 15 sec.
	YRL-110C□ YRL-80C□	100~300V	below 6VA	—			*4 —	*4) YRL-80 response time: 0.1,1~15, external VT-62M, 80 degree: below 15 sec. 0.15~0.5 sec. external DH-41 (except Vo Meter)
Watt Meter	Single phase WRL-110C□-12 WRL-80C□-12	110V, 5A 220V, 5A	2VA	1VA	0.5~30		WT-83M-12	—
	3 phase WRL-110C□-33 WRL-80C□-33	110V, 5A 220V, 5A	Each phase 2VA	Each phase 1VA	0.5~30		WT-83M-33	—
Var Meter	Single phase WVRL-110C□-12 WVRL-80C□-12	110V, 5A 220V, 5A	2VA	1VA	0.5~30		WVT-83M-12	Specify Frequency
	3 phase (balance) WVBRL-110C□-33 WVBRL-80C□-33	110V, 5A 220V, 5A	Each phase 2VA	Each phase 1VA	0.5~30		WVBT-83M-33	Specify Frequency
Power Factor Meter	Single phase PRL-110C□-12 PRL-80C□-12	110V, 5A 220V, 5A	3VA	1VA	2~30		PT-83M-12	Specify Frequency
	3 phase PRL-110C□-33 PRL-80C□-33	110V, 5A 220V, 5A	Each phase 3VA	Each phase 1VA	2~30		PT-83M-33	Specify Frequency

# Specification List of RL Series

## LIST OF RL SERIES

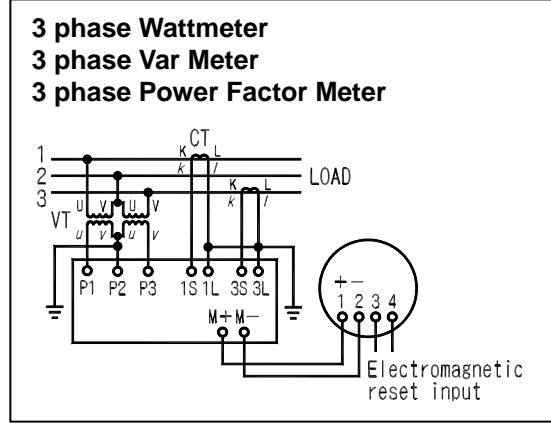
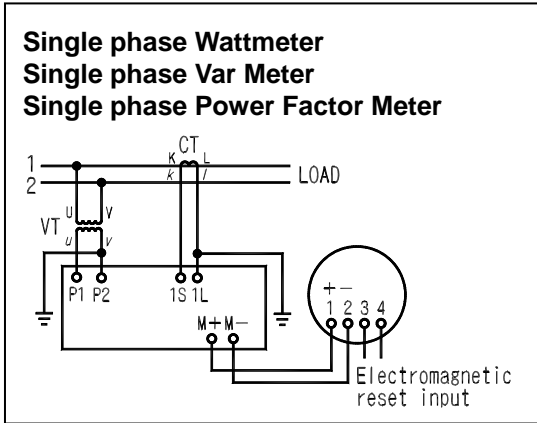
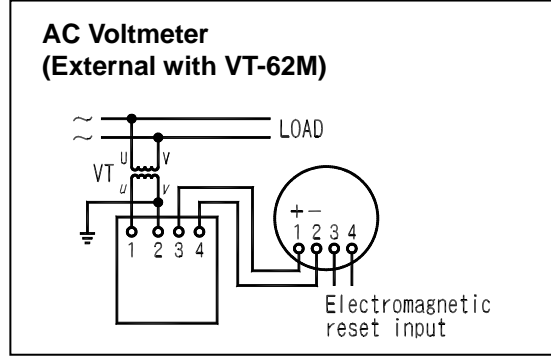
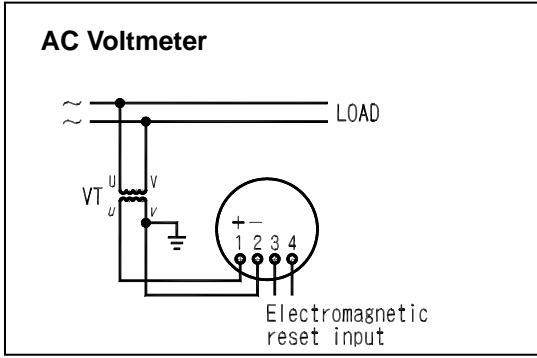
MODEL		RL – 110C			RL – 80C			
Type	Principle	Model	Class	Record Pointer Accuracy	Model	Class	Record Pointer Accuracy	
DC Ammeter	Moving coil	MRL-110C□	1.5	± 2.0%	MRL-80C	1.5	± 2.0%	
DC Voltmeter		MRL-110C□	1.5	± 2.0%	MRL-80C	1.5	± 2.0%	
AC Ammeter	Rectifier	CRL-110C□	1.5	± 2.0%	CRL-80C	1.5	± 2.0%	
AC Voltmeter		CRL-110C□	1.5	± 2.0%	CRL-80C	1.5	± 2.0%	
DC Receiving Indicator	Moving coil	XRL-110C□	1.5	± 2.0%	XRL-80C	1.5	± 2.0%	
AC Receiving Indicator	Rectifier	YRL-110C□	1.5	± 2.0%	YRL-80C	1.5	± 2.0%	
Watt Meter	Single phase	Transducer	WRL-110C□-12	1.5	± 2.0%	WRL-80C-12	1.5	± 2.0%
	3 phase		WRL-110C□-33	1.5	± 2.0%	WRL-80C-33	1.5	± 2.0%
Var Meter	Single phase	Transducer	WVRL-110C□-12	1.5	± 2.0%	WVRL-80C-12	1.5	± 2.0%
	3 phase		WVRL-110C□-33	1.5	± 2.0%	WVRL-80C-33	1.5	± 2.0%
Power Factor Meter	Single phase	Transducer	PRL-110C□-12	5.0	± 6.0%	PRL-80C-12	1.5	± 6.0%
	3 phase		PRL-110C□-33	5.0	± 6.0%	PRL-80C-33	1.5	± 6.0%

### Connection Diagram

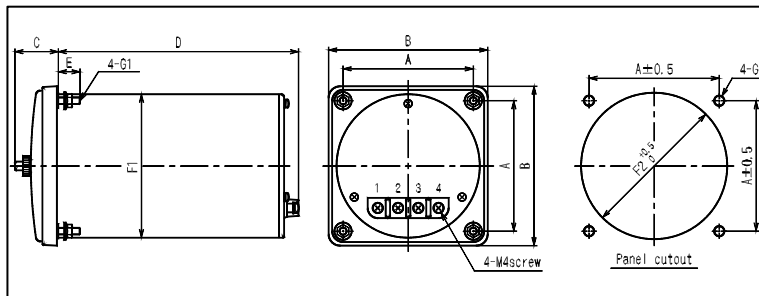


# Specification List of RL Series

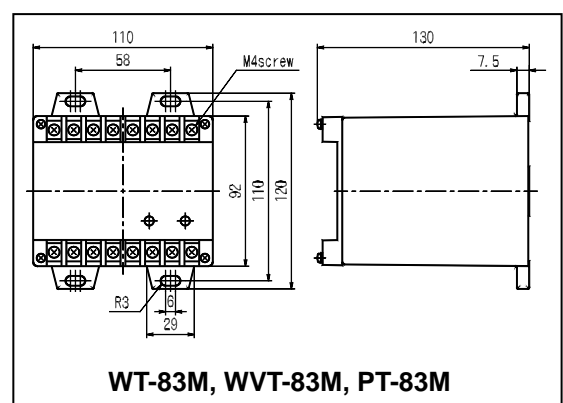
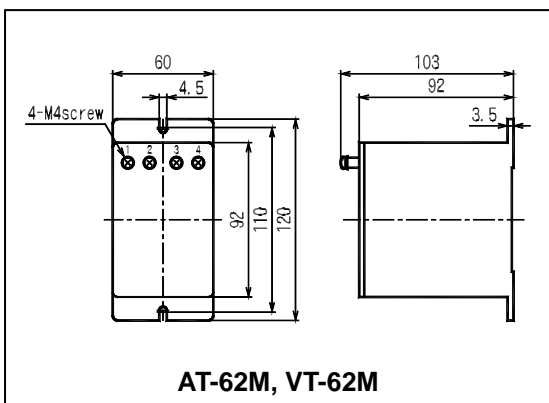
## Connection Diagram



## Dimensions



## Dimensions For Accessory Transducer



Type	A	B	C	D	E	F1	F2	G1	G2	weight (kg)
RL-110C	90	110	30	167 (MTRL: 169)	15	99Φ	101Φhole	M5 screw	7Φhole	1.1
RL-80C	64	80	22.5	168 (MTRL: 169)	10	65Φ	67Φhole	M4 screw	5.5Φhole	1.0