

FUNCTION GENERATING TRANSDUCER

CFGTP1 - □ □ □ □

Use

A transducer which does broken line operation of a DC input. Up to 15 broken lines (kinked point X and Y 16 each) can be changed by a programming unit (CCM-1).

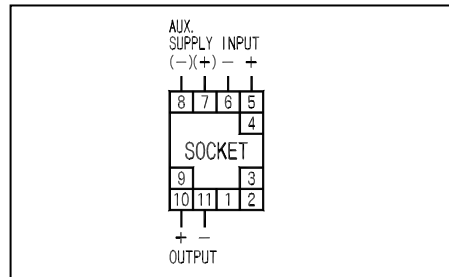
Features

1. Constant voltage/current output.
2. Withstand voltage between electric circuit and outer case AC2, 000V (50/60Hz), AC1, 500V (50/60Hz) for 1 minute between input/output and auxiliary supply, or AC1, 500V (50/60Hz) for 1 minute between input and output.
3. Plus/minus input/output is not manufacturable.
4. Impulse withstands voltage 5kV, 1.2/50µs (between electric circuit and outer case), and positive/ negative polarity 3 times each is guaranteed.

CFGTP1-C7H1
(80 × 50 × 133mm/500g)



Connection diagram



Specification

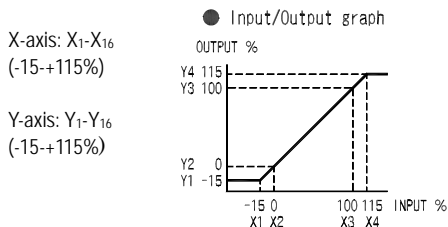
Input (input resistance)	Output (load resistance)	Auxiliary supply	Common specification
A8 : DC1-5V (approx.1M) C7 : DC4-20mA (approx.100) 00 : other than those above	1 : DC0-100mV (200) 2 : DC0-1V (200) 3 : DC0-5V (1k) 4 : DC 0-10V (2k) 5 : DC1-5V (1k) A : DC0-1mA (12k) B : DC0-5mA (2.4k) C : DC0-10mA (1.2k) D : DC0-16mA (750) E : DC1-5mA (3k) F : DC4-20mA (750) H : DC4-20mA (800) DC1-5V (250k) SW switching 0 : other than those above	1 : AC100V(+10%, -15%),50/60Hz 2 : AC110V(+10%, -15%),50/60Hz 3 : AC200V(+10%, -15%) 50/60Hz 4 : AC220V(+10%, -15%), 50/60Hz 5 : DC24V(+10%, -15%) 0 : other than those above	Tolerance (when gain is 1) : ± 0.25% Consumption VA: AC power source:2.5VA DC power source:3.0W Weight: AC power source:500g DC power source:400g

Open of current output: even if the current output terminal is used in a state of regular open, there is no problem. Also, a voltage of approx. 25V occurs on the output terminal.

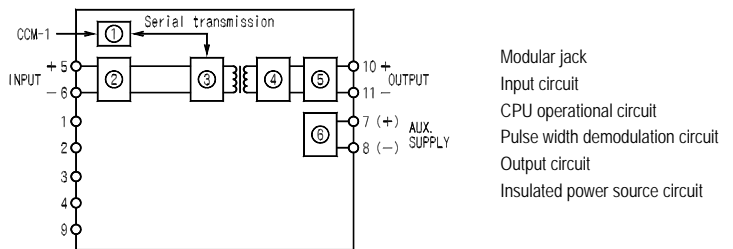
UR-1 precise resistance unit
(Selling separately)

Use UR-1 combined with a transducer of voltage input. When changing the transducer in a hot line state at the time of current input, if measures against open are necessary, connect UR-1 to socket and convert it into a voltage signal before using it.

(UR-1, resistance specified)



Block diagram



Purchase specifications

Item to specify

Type

CFGTP1 - **C7** **H** **1**

↑ ↑ ↑

Input Output Auxiliary supply

In the case of specifying the kinked point, only specify the number of necessary point by order of X1 < X2 < < X15 < X16.

Factory preset

Products are shipped in the following setting.
(Can be changed by specification)

PARAMETER			
X/DATA		Y/DATA	
1	-1.00%	1	-1.00%
2	0.00%	2	0.00%
3	100.00%	3	100.00%
4	110.00%	4	110.00%