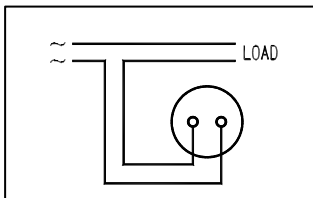


AC Ammeter (Moving Iron Type) - PSK

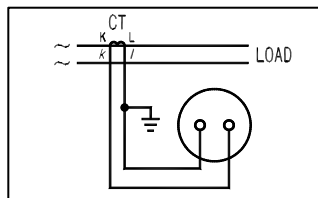
AC AMMETER

Nomal Scale	Extended Scale				Consumption VA	Note: (1) Please use external current transformer (CT) 5A (0.1A, 1A) for scale 30A or more and scale 600V or more in circuit voltage. ► Meter for 400Hz use can manufacture. Please specify. For SCR Control Waveform Meter SCR waveform input (Distortion waveform) also can manufacture. Type name: PSK-□CH
Max. scale value	2-time	3-time	4-time	5-time	PSK-120C, 100C, 80C, 60C	
100mA	200mA	300mA	400mA	500mA	1VA	
500mA	1A	1.5A	2A	2.5A		
1A	2A	3A	4A	5A		
3A	6A	9A	12A	15A		
5A	10A	15A	20A	25A		
7.5A	15A	22.5A	30A	37.5A		
10A	20A	30A	40A	50A		
15A	30A	45A	60A	75A		
20A	40A	60A	80A	100A		
30A	60A	90A	120A	150A		
5/5A	10A	15A	20A	25A	1VA	
?	?	?	?	?		
10k/ 5A (1)	20kA	30kA	40kA	50kA		

Connection Diagram

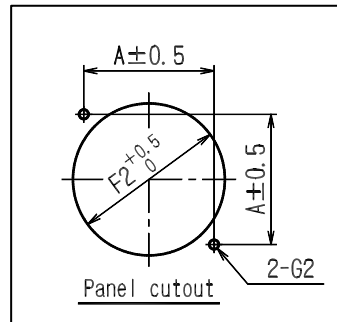
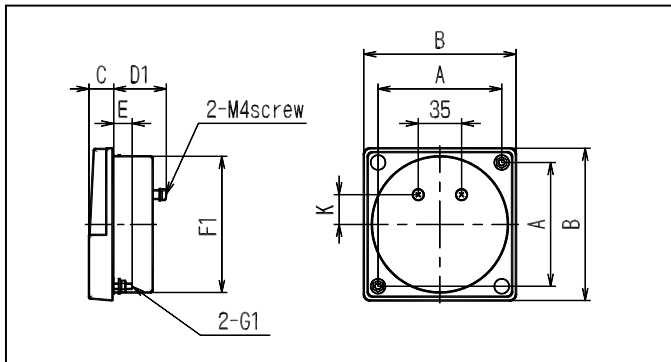


Ammeter



Ammeter external with CT

Dimensions



For ammeter & voltmeter use

Type	A	B	C	D1	D2	E	F1	F2	G1	G2	K	weight (g)
PSK-120C	100	123	20	41.5	48	15	110Φ	112ΦHole	M5 Screw	7ΦHole	24	370
PSK-100C	80	100	16	41.5	48	15	85Φ	87ΦHole	M4 Screw	5.5ΦHole	15	260
PSK-80C	64	80	14.5	37.5	45.5	10	65Φ	67ΦHole	M3 Screw	4ΦHole	0	165
PSK-60C	48	60	14.5	37.5	45.5	10	52Φ	54ΦHole	M3 Screw	4ΦHole	6	130

Voltmeter (Moving Iron Type) - PSK

VOLTMETER

Max. Scale Value	Consumption VA		Accessory (Series Resistor)
	PSK-120C, 100C, 80C, 60C		
50V 100V	5VA		
150V 300V	5VA		
600V	10VA		DM-41 ⁽¹⁾
600/150V ⁽²⁾ ∴ 550k/150V	5VA		

Note:

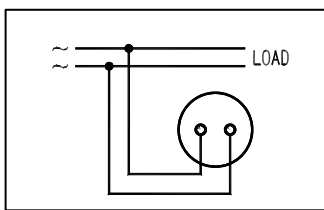
- (1) Use external DM-41 for scale from 301V~600V.
- (2) Use external voltage transformer (VT) 150V for scale 600V or more.

For SCR Control Waveform

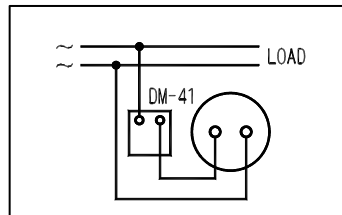
Meter SCR waveform input (Distortion Waveform) also can manufacture.

Type Name: PSK-□CH

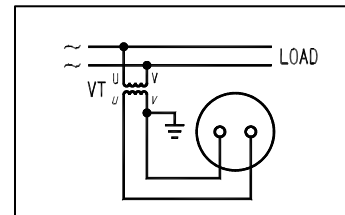
Connection Diagram



Voltmeter

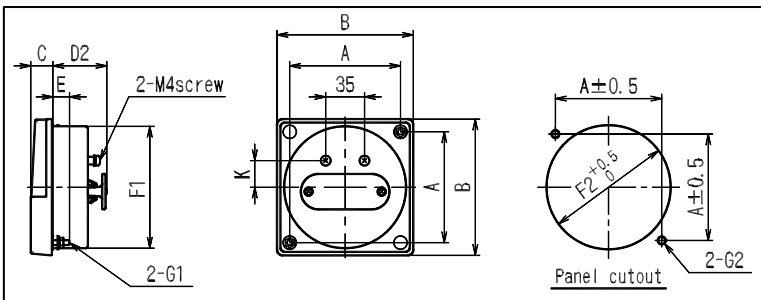


Voltmeter external with series resistor

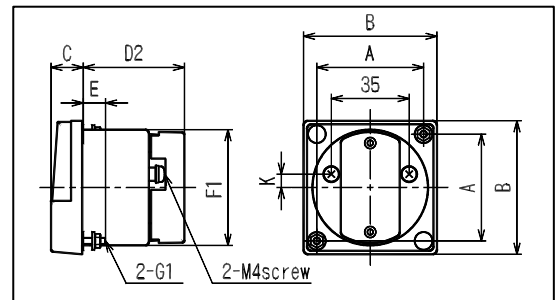


Voltmeter external with VT

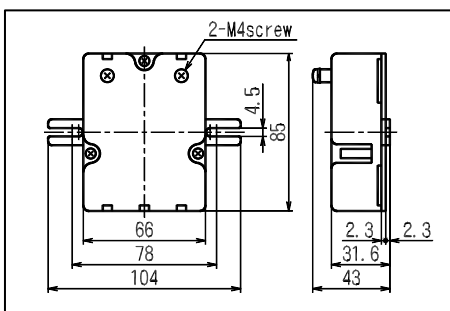
Dimension



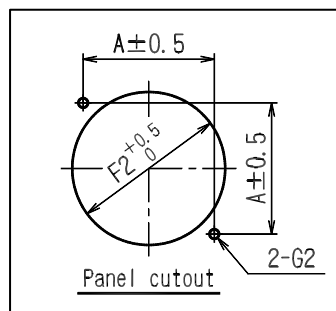
For voltmeter PSK-120C, 100C



For voltmeter PSK-80C, 60C



Dimension for DM-41



For ammeter & voltmeter use

Type	A	B	C	D1	D2	E	F1	F2	G1	G2	K	weight(g)
PSK-120C	100	123	20	41.5	48	15	110Φ	112ΦHole	M5 Screw	7ΦHole	24	370
PSK-100C	80	100	16	41.5	48	15	85Φ	87ΦHole	M4 Screw	5.5ΦHole	15	260
PSK-80C	64	80	14.5	37.5	45.5	10	65Φ	67ΦHole	M3 Screw	4ΦHole	0	165
PSK-60C	48	60	14.5	37.5	45.5	10	52Φ	54ΦHole	M3 Screw	4ΦHole	6	130