

Power Factor Meter (Transducer Type) - PPK

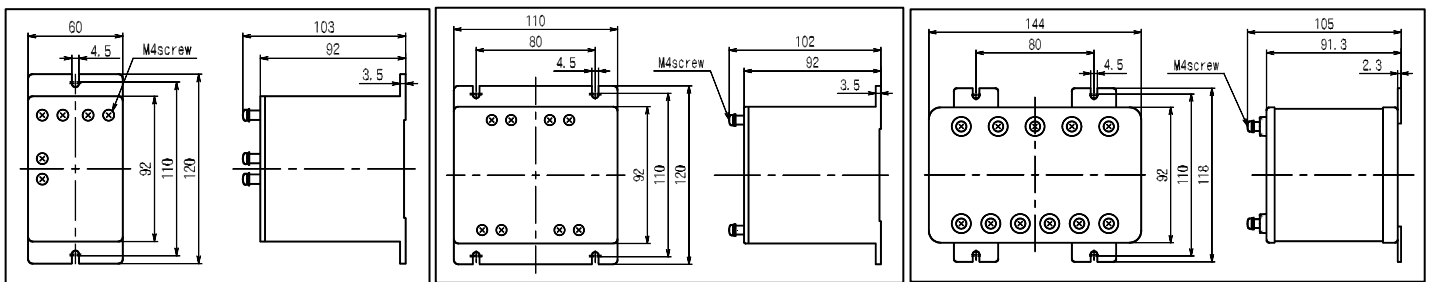
POWER FACTOR METER ⁽¹⁾

Application	Type	Rating ⁽²⁾	Consumption VA		Accessory (Transducer)	
			Voltage	Current	80C	60C
Single phase	PPK-120NC-12 100NC-12 80C-12 60C-12	110V, 5A (1A)	1VA	1VA	PT-62M-12 ⁽⁵⁾	
		220V, 5A (1A)	1VA	1VA		
3 phase (balanced)	PPBK-120NC-33 100NC-33 80C-33 60C-33	110V, 5A (1A)	Each phase 1VA	Each phase 1VA	PBT-62M-33 ⁽⁵⁾	
		220V, 5A (1A)	Each phase 1VA	Each phase 1VA		
3 phase (unbalanced) ⁽⁴⁾	PPK-120NC-33 100NC-33 80C-33 60C-33	110V, 5A (1A)	Each phase 1VA	Each phase 1VA	PT-63M-33 ⁽⁵⁾	
		220V, 5A (1A)	Each phase 1VA	Each phase 1VA		
3 phase 4-wire (balanced)	PPBK-120NC-34 100NC-34 80C-34 60C-34	110V, 5A (1A)	Each phase 1VA	Each phase 1VA	PBT-62M-34 ⁽⁵⁾	
		220V, 5A (1A)	Each phase 1VA	Each phase 1VA		
3 phase 4-wire (unbalanced) ⁽³⁾⁽⁴⁾	PPK-120C-34 100C-34 80C-34 60C-34	110V, 5A (1A)	Each phase 1VA	Each phase 1VA	PT-64M-34 ⁽⁵⁾	
		220V, 5A (1A)	Each phase 1VA	Each phase 1VA		

Note:

- (1) Standard Scale is Lead0.5~1~Lag0.5. Scale for 3 phase 3-wire balance only is Lead0~1~Lag0.
(Effective measuring range: Lead0.3~1~Lag0.3 also can manufacture)
Please specify frequency (50Hz or 60Hz) for all type except 3 phase balanced circuit.
- (2) If above rating is exceeds, please use external CT, 5A(1A) or VT, 110V respectively.
Usable voltage range for 110V: 90~130V & 220V: 180~260V.
Please use in positive phase sequence.
- (3) All type PPK-120C, 100C, 80C, 60C-34 will be external with PT-64M-34.
- (4) 3 phase (unbalanced), 3 phase 4-wire (unbalanced) is voltage balanced.
- (5) Refer to next page for the connection diagram.

Dimensions for Attachment Transducer



For Type: □T62M□-□

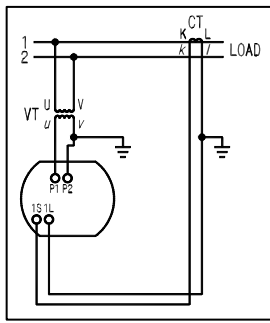
For Type: PT - 63M

For Type: PT - 64M

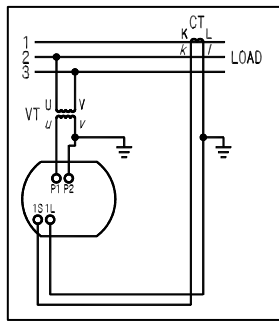
Type		A	B	C	D	E	F1	F2	G1	G2	K	weight (g)
PPK-120NC	PPBK-120NC	100	123	20	145.5	15	110Φ	112ΦHole	M5 Screw	7ΦHole	0	510
PPK-100NC	PPBK-100NC	80	100	16	135	15	85Φ	87ΦHole	M4 Screw	5.5ΦHole	0	500
PPK-80C	PPBK-80C	64	80	14.5	29.5	10	65Φ	67ΦHole	M3 Screw	4ΦHole	0	930
PPK-60C	PPBK-60C	48	60	14.5	29.5	10	52Φ	54ΦHole	M3 Screw	4ΦHole	6	890

Power Factor Meter (Transducer Type) - PPK

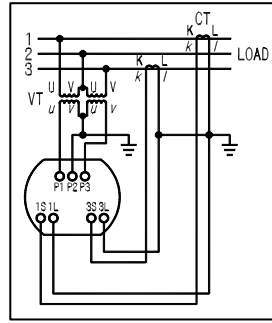
Connection Diagram & Dimensions (All-in-one Transducer Type)



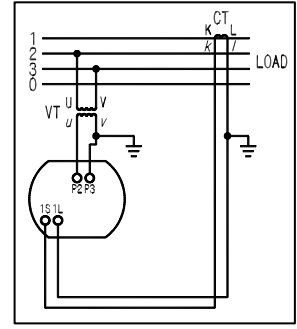
Single phase
Power factor meter



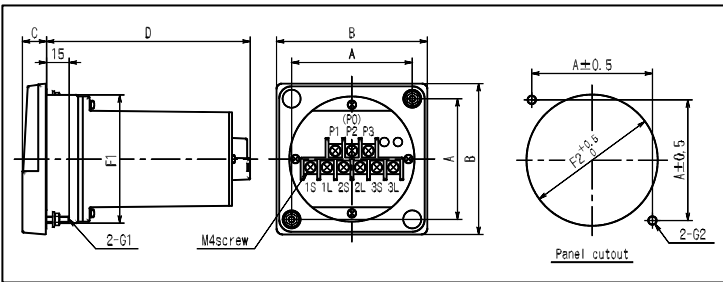
3 phase 3-wire
Power factor meter
(balanced)



3 phase 3-wire
Power factor meter
(unbalanced)

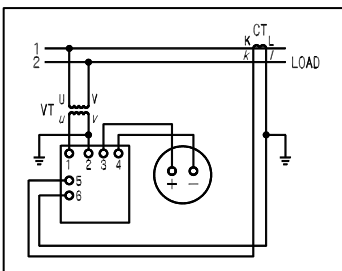


3 phase 4-wire
Power factor meter
(balanced)

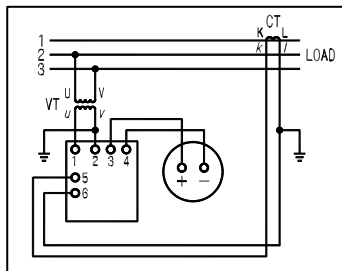


Connection Diagram & Dimensions (External with Transducer)

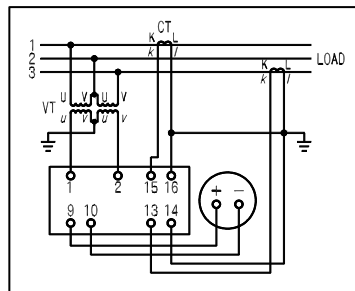
Note: Some error may be observed if phase sequence is wrong.



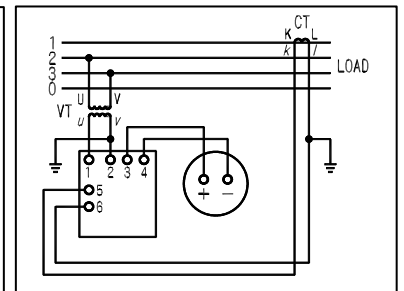
Single phase
Power factor meter
external with PT-62M-12



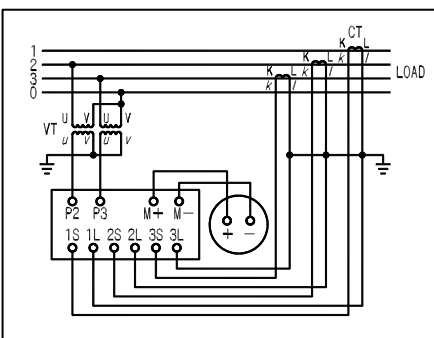
3 phase balanced
Power factor meter
external with PBT-62M-33



3 phase unbalanced
power factor meter
external with PT-63M-33



3 phase 4-wire
Power factor meter (balanced)
external with PBT-62M-34



3 phase 4-wire
power factor meter (unbalanced)
external with PT-64M-34

