

Frequency Meter (Transducer Type) - PAK

Rated Voltage	Measurement Range ⁽¹⁾	Consumption VA	Voltage Fluctuation Range
		PAK-120C, 100C, 80C, 60C	
110V	45~55Hz 55~65Hz 45~65Hz 350~450Hz	1.7VA	90~130V ⁽²⁾
220V	45~55Hz 55~65Hz 45~65Hz 350~450Hz	2.5VA	180~260V ⁽²⁾

Note:

⁽¹⁾ Special frequency measurement range also can manufacture (up until 1000Hz) Please specify.

⁽²⁾ Usable voltage range for 110V: 90~130V & 220V: 180~260V

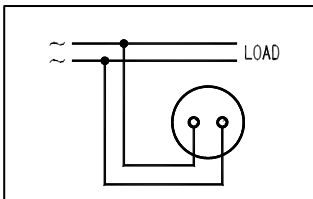
Please contact with us for manufacture above rated voltage and voltage fluctuation range.

For SCR Waveform Meter

Meter SCR waveform input (Distortion waveform) also can manufacture.

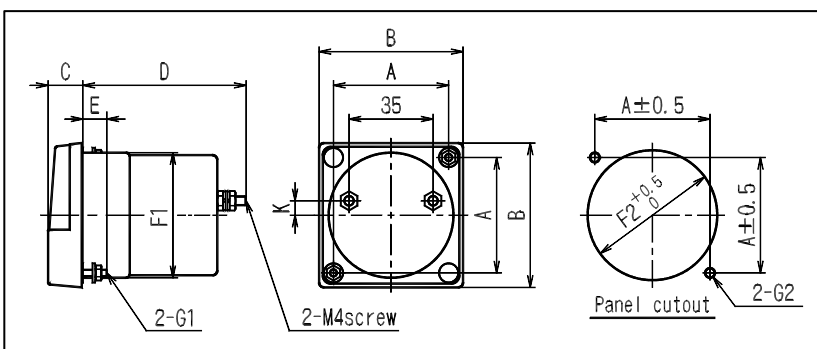
Type name: PAK-□CH

Connection Diagram



Frequency Meter

Dimensions



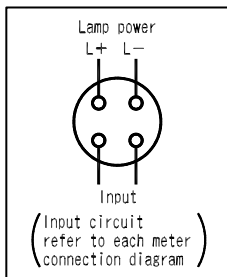
Type	A	B	C	D	E	F1	F2	G1	G2	K	weight (g)
PAK-120C	100	123	20	80	15	110Φ	112ΦHole	M5 Screw	7ΦHole	0	470
PAK-100C	80	100	16	69.5	15	85Φ	87ΦHole	M4 Screw	5.5ΦHole	0	300
PAK-80C	64	80	14.5	68	10	65Φ	67ΦHole	M3 Screw	4ΦHole	0	230
PAK-60C	48	60	14.5	68	10	52Φ	54ΦHole	M3 Screw	4ΦHole	6	150

Frequency Meter (Transducer Type) - PAK

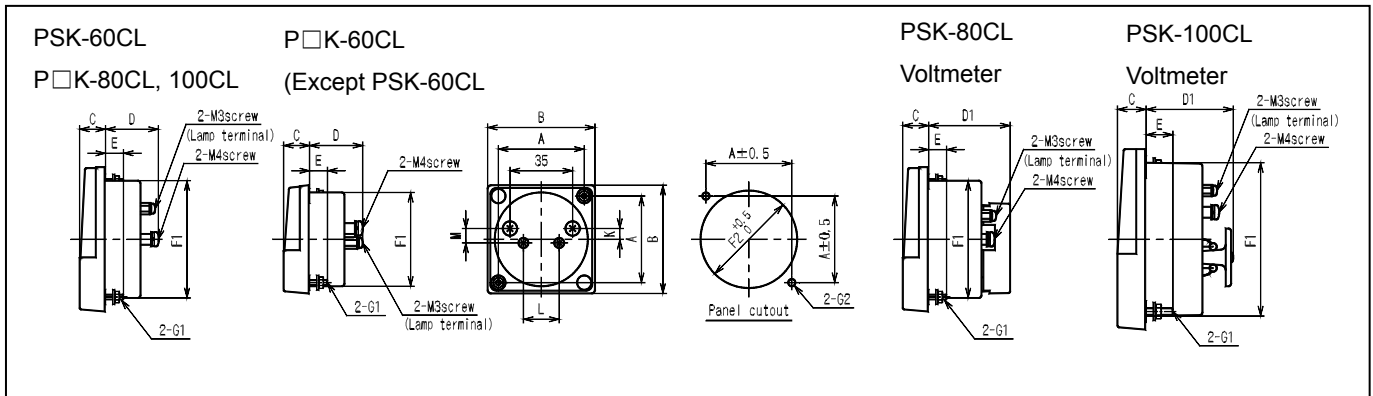
METER EXTERNAL WITH LAMP

Product Name		PK-100C	PK-80C	PK-60C	Accessory
DC Ammeter , Voltmeter		PMK-100CL	PMK-80CL	PMK-60CL	—
DC Receiving Indicator		PXK-100CL	PXK-80CL	PXK-60CL	—
AC Receiving Indicator		PYK-100CL	PYK-80CL	PYK-60CL	—
AC Ammeter, Voltmeter		PSK-100CL	PSK-80CL	PSK-60CL	External DM-41 for PSK-60CL
AC Ammeter, Voltmeter		PCK-100CL	PCK-80CL	PCK-60CL	—
Watt Meter (unbalanced)		PWK-100CL-12,13,33,34	PWK-80CL-12,13,33,34	PWK-60L-12,13,33,34	External Transducer
Var Meter	Unbalanced	PWVK-100CL-12,33,34	PWVK-80CL-12,33,34	PWVK-60CL-12,33,34	External Transducer
	Balanced	PWVBK-100CL-33	PWVBK-80CL-33	PWVBK-60CL-33	External Transducer
Power	Unbalanced	PPK-100CL-12,33,34	PPK-80CL-12,33,34	PPK-60CL-33,34	External Transducer
Factor Meter	Balanced	PPBK-100CL-33,34	PPBK-80CL-33,34	PPBK-80CL-33,34	External Transducer
Frequency		PAK-100CL	PAK-80CL	PAK-60CL	External Transducer

Connection Diagram



Dimensions



Type	A	B	C	D	D1	E	F1	F2	G1	G2	K	L	M	weight (g)
P□K-100CL	64	100	16	31	48	15	85Φ	87ΦHole	M4 screw	5.5ΦHole	0	35	17	180
P□K-80CL	48	80	14.5	29.5	45.5	10	65Φ	67ΦHole	M3 screw	4ΦHole	0	35	17	125
P□K-60CL	48	60	14.5	30.5	-	10	52Φ	54ΦHole	M3 screw	4ΦHole	6	20	8	90

Please refer to below for PSK

Type	A	B	C	D	D1	E	F1	F2	G1	G2	K	L	M	weight (g)
PSK-100CL	64	100	16	41.5	48	15	85Φ	87ΦHole	M4 screw	5.5ΦHole	15	25	12	260
PSK-80CL	48	80	14.5	39.5	45.5	10	65Φ	67ΦHole	M3 screw	4ΦHole	0	38	13	165
PSK-60CL	48	60	14.5	40.5	-	10	52Φ	54ΦHole	M3 screw	4ΦHole	6	13	6	130