

POWER FACTOR METER / FREQUENCY METER (Transducer Type)

PPD-96 /
PAD-96

Power Factor Meter ⁽¹⁾

Type	Rated Value ^{(2) (3)}	Approx. consumption VA		Accessory Transducer
		Voltage	Current	
Single phase	110V, 5A (1A)	2VA	1VA	PT-62M-12 ⁽⁵⁾
	220V, 5A (1A)			
Three phase (balanced)	110V, 5A (1A)	each phase 1VA	each phase 1VA	—
	220V, 5A (1A)	each phase 2VA		
Three phase (unbalanced) ⁽⁴⁾	110V, 5A (1A)	each phase 1VA	each phase 1VA	—
	220V, 5A (1A)	each phase 2VA		
Three phase 4 wire ⁽⁴⁾	110V, 5A (1A)	each phase 1VA	each phase 1VA	PT-64M-34 ⁽⁵⁾
	220V, 5A (1A)	each phase 2VA		

Note:

⁽¹⁾ Standard scale: Lead0.5~1~Lag0.5. Scale for Three phase balance: Lead0~1~Lag0.

(Effective measuring range: Lead0.3~1~Lag0.3) also can be manufactured.

Please specify the frequency (50Hz or 60Hz) for all type except 3 phase balanced circuit.

⁽²⁾ When above rating is exceeds, please external CT or VT respectively to meter 110V, 5A (1A)

Usable voltage range: 110V: 90~130V ; 220V: 180~260V

Please use in positive phase sequence.

⁽³⁾ Tolerance guarantee is 1/5 or more of the rated current.

⁽⁴⁾ 3 phase (unbalanced), 3 phase 4 wire (unbalanced) is voltage balanced.

⁽⁵⁾ Please refer to page for the Transducer connection diagram.

Frequency Meter

Rated Voltage	Measuring Range	Approx. Consumption VA	Voltage variation range	Accessory
110V ⁽²⁾	45~55Hz	1.7VA	90~130V	—
	55~65Hz			
	45~65Hz			
	350~450Hz ⁽¹⁾			
220V ⁽²⁾	45~55Hz	2.5VA	180~260V	—
	55~65Hz			
	45~65Hz			
	350~450Hz ⁽¹⁾			

Note:

⁽¹⁾ Meter with special frequency range also can be manufactured (up to 1000Hz).

⁽²⁾ Usable voltage range: 110V: 90~130V ; 220V: 180~260V

Please contact with us for manufactured above rated voltage and voltage change range.

For SCR Waveform Meter

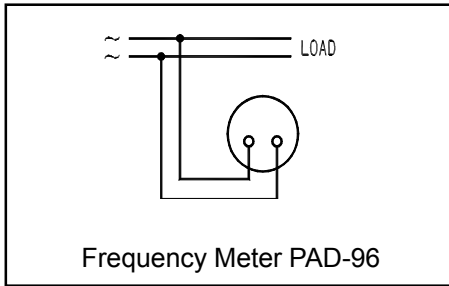
Meter SCR waveform input (Distortion waveform) also can be manufactured.

Type Name: PAD-96H-□

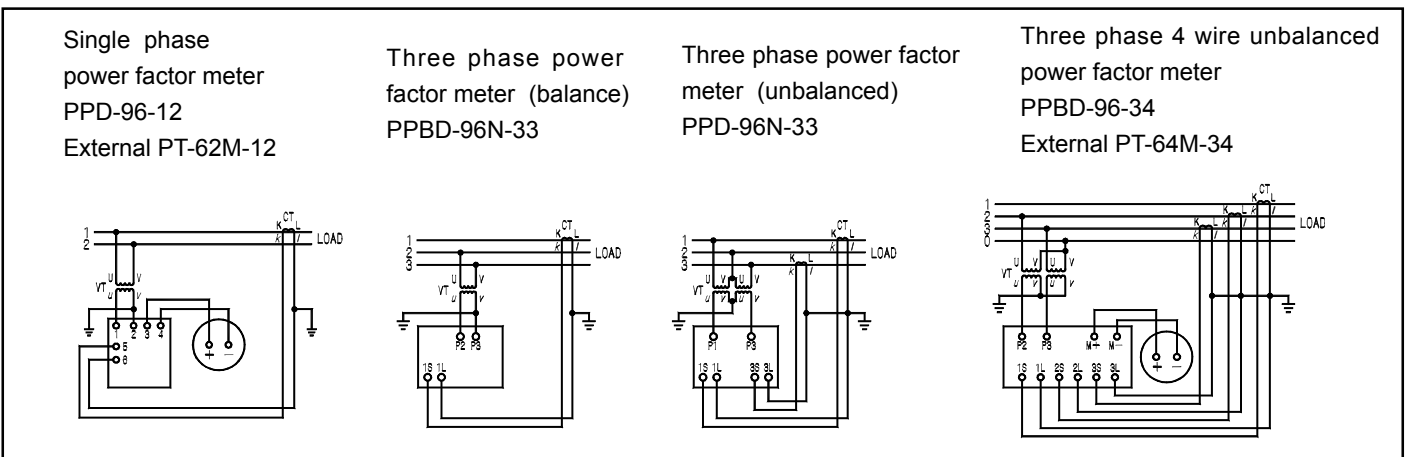
POWER FACTOR METER / FREQUENCY METER (Transducer Type)

PPD-96 /
PAD-96

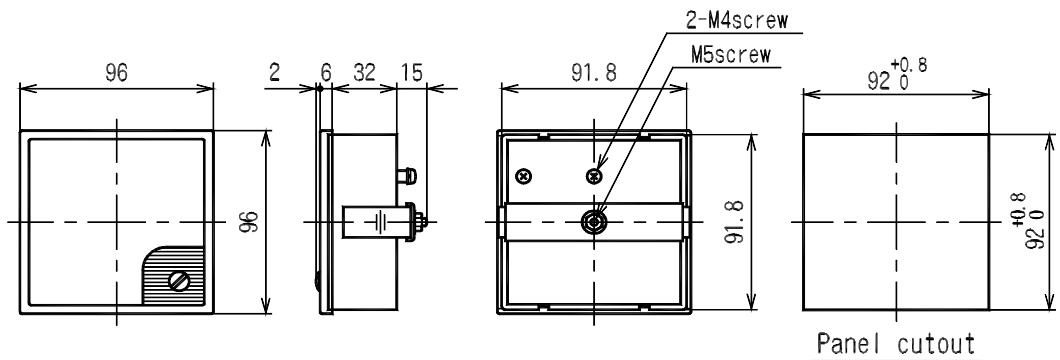
Connection Diagram



Connection Diagram (False Phase Sequence Leads To Error)



Dimensions (PPD-96 / PAD-96 External Transducer)



Dimensions (PPD-96N Internal Transducer)

