

# § Wide Angle METER § L Series

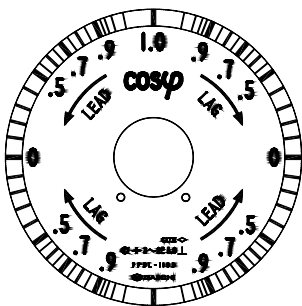
## POWER FLOW 3 PHASE POWER FACTOR METER (TRANSDUCER TYPE) FPDL

### 1. POWER FACTOR METER

Method	Type	Rated Voltage	Rated Frequency	Auxiliary supply	Approx. Consumption VA		
					Voltage side	Current side	Aux. supply
3-phase	FPDL-110D-33	110V, 5A(1A)	50Hz	AC110V AC220V DC110V	P1-P2 6.5VA; 3.5VA for with aux. supply	1VA or less each	AC 3VA DC4.5VA In the case of with aux. supply
			60Hz				
		220V, 5A(1A)	50Hz				
			60Hz				

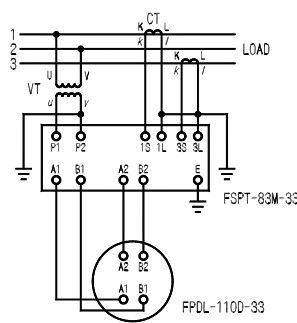
- ▶ Specify the frequency either 50Hz or 60Hz.
- ▶ In the case of rating exceeding those above, use a 110V, 5A (1A) meter together with a CT or a VT respectively.
- ▶ Please use the meter in positive phase sequence.
- ▶ For standard scale, upper part shows receiving power and under part shows power transmission. Please specify if using in the reverse case.

### SCALE BOARD

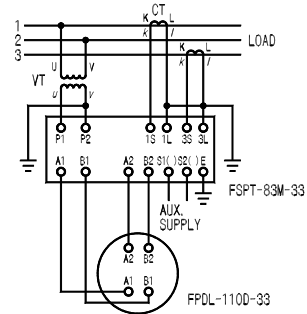


### CONNECTION DIAGRAM

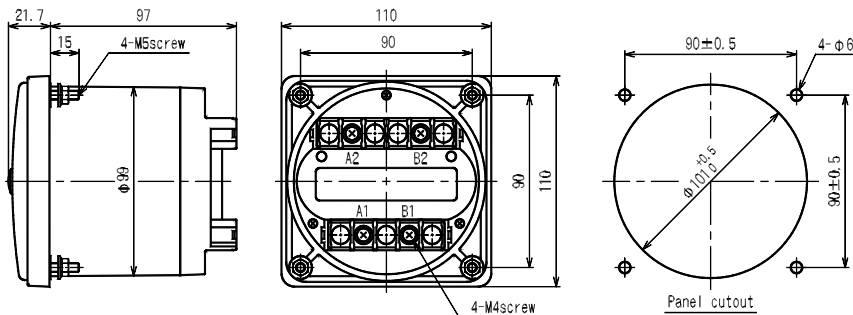
(1) Without Aux. Supply  
(Supplied by Input Voltage)



(2) With Aux. Supply

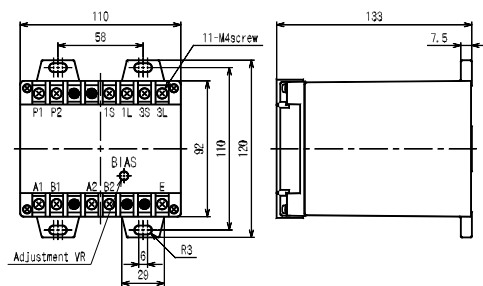


### DIMENSIONS

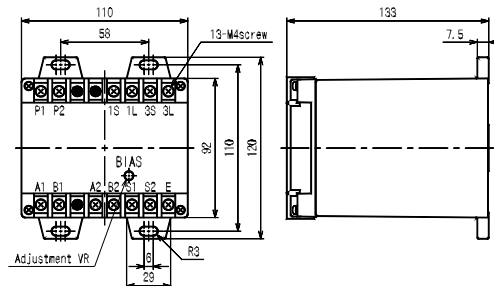


### ATTACHMENT TRANSDUCER (FSPT-83M-33)

(1) Without Aux. Supply (Supplied by Input Voltage)



(2) With Aux. Supply



- ▶ At the time of installation, select a place with less mechanical shock, dust and corrosive gas, a place free from the affection of electromagnetic field of a heavy current bus or a saturable reactor nearby.