

§ Wide Angle METER § L Series

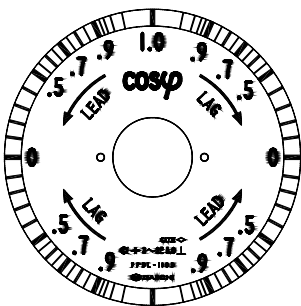
POWER FLOW 3 PHASE POWER FACTOR METER (TRANSDUCER TYPE) FPDL

1. POWER FACTOR METER

Method	Type	Rated Voltage	Rated Frequency	Auxiliary supply	Approx. Consumption VA		
					Voltage side	Current side	Aux. supply
3-phase	FPDL-110D-33	110V, 5A(1A)	50Hz	AC110V AC220V DC110V	P1-P2 6.5VA; 3.5VA for with aux. supply	1VA or less each	AC 3VA DC4.5VA In the case of with aux. supply
			60Hz				
		220V, 5A(1A)	50Hz				
			60Hz				

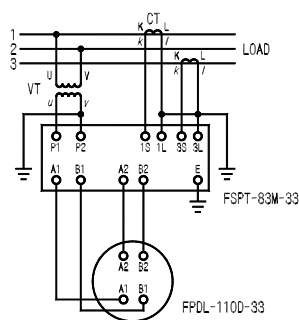
- ▶ Specify the frequency either 50Hz or 60Hz.
- ▶ In the case of rating exceeding those above, use a 110V, 5A (1A) meter together with a CT or a VT respectively.
- ▶ Please use the meter in positive phase sequence.
- ▶ For standard scale, upper part shows receiving power and under part shows power transmission. Please specify if using in the reverse case.

SCALE BOARD

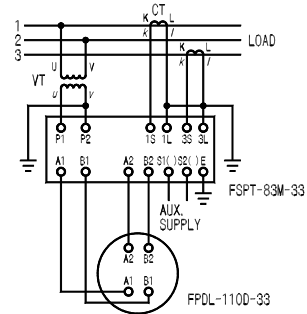


CONNECTION DIAGRAM

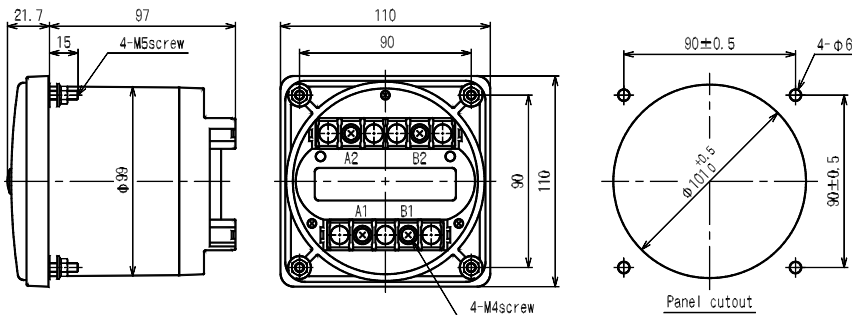
(1) Without Aux. Supply
(Supplied by Input Voltage)



(2) With Aux. Supply

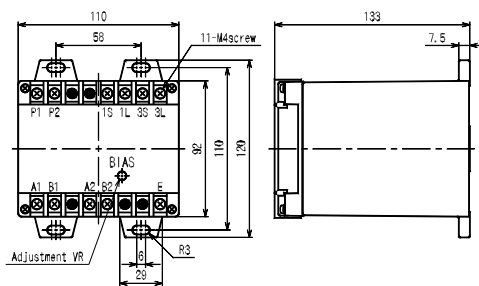


DIMENSIONS

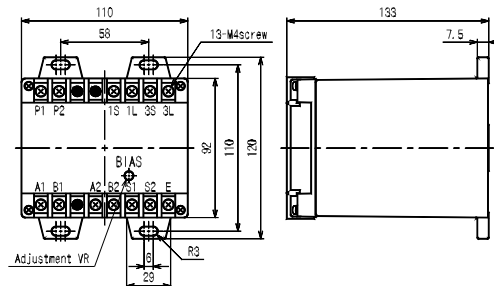


ATTACHMENT TRANSDUCER (FSPT-83M-33)

(1) Without Aux. Supply (Supplied by Input Voltage)



(2) With Aux. Supply



- ▶ At the time of installation, select a place with less mechanical shock, dust and corrosive gas, a place free from the affection of electromagnetic field of a heavy current bus or a saturable reactor nearby.