

AC Ammeter (Moving Iron Type) - LSK

AC AMMETER

Nomal Scale	Extended Scale				Consumption VA
Max. scale value	2-time	3-time	4-time	5-time	LSK-12C, 10C, 8C
100mA	200mA	300mA	400mA	500mA	1VA
500mA	1A	1.5A	2A	2.5A	
1A	2A	3A	4A	5A	
3A	6A	9A	12A	15A	
5A	10A	15A	20A	25A	
7.5A	15A	22.5A	30A	37.5A	
10A	20A	30A	40A	50A	
15A	30A	45A	60A	75A	
20A	40A	60A	80A	100A	
30A	60A	90A	120A	150A	
5/5A ⁽¹⁾ ? 10k/5A	10A ? 20kA	15A ? 30kA	20A ? 40kA	25A ? 50kA	1VA

Note:

⁽¹⁾ Please use external current transformer (CT) 5A (0.1A or 1A) for scale 30A or more & scale 600V or more in current voltage.

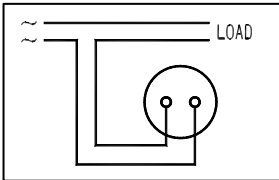
► Meter for 400Hz use can manufacture also please specify.

For SCR Control Waveform

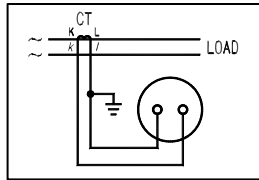
Meter SCR waveform input (Distortion waveform) also can manufacture.

Type name: LSK-□CH

Connection Diagram

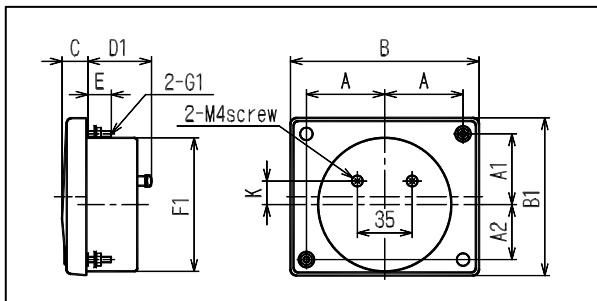


Ammeter



Ammeter external CT

Dimensions



Type	A	A1	A2	B	B1	C	D1	D2	E	F1	F2	G1	G2	K	weight (g)
LSK-12C	50	45	35	120	100	16	41.5	48	15	85 Φ	87Φ Hole	M4 Screw	5.5Φ Hole	15	280
LSK-10C	40	37	27	100	83	14	37.5	45.5	10	65 Φ	67Φ Hole	M3 Screw	4Φ Hole	5	180
LSK-8C	32	29.5	18.5	80	67	14	37.5	45.5	10	52 Φ	54Φ Hole	M3 Screw	4Φ Hole	5.5	150

Voltmeter (Moving Iron Type) - LSK

VOLTMETER

Max. Scale Value	Consumption VA	Accessory (Series Resistor)
	LSK-12C, 10C, 8C	
50V 100V	5VA	—
150V 300V	5VA	—
600V ⁽¹⁾	10VA	DM-41
600/150V ⁽²⁾ ∴ 550k/150V	5VA	—

Note:

(1) Please use external DM-41 for scale from 301V~600V.

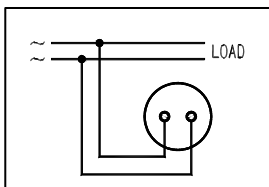
(2) Please use external voltage transformer (VT) 150V for scale 600V or more.

For SCR Control Waveform

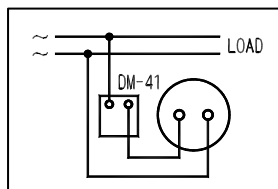
Meter SCR waveform input (Distortion Waveform) can manufacture please specify.

Type Name: LSK-□CH

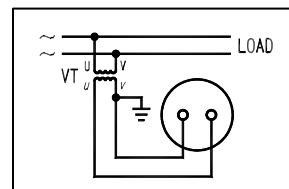
Connection Diagram



Voltmeter

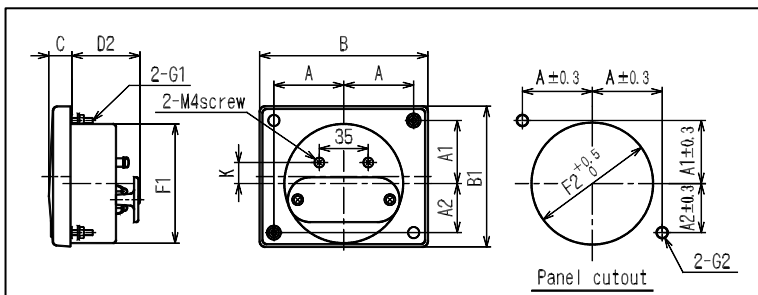


Voltmeter external Series resistor

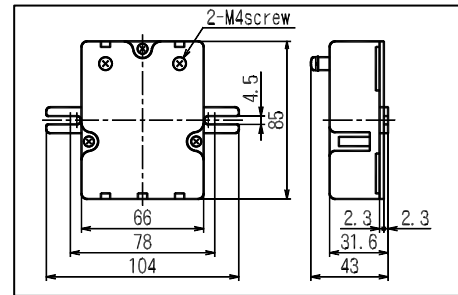


Voltmeter external VT

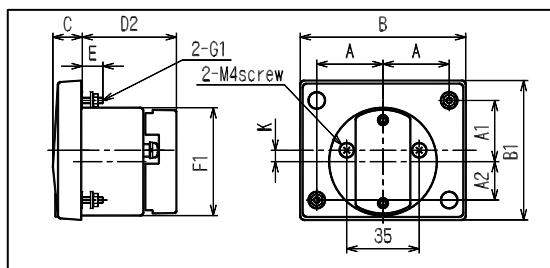
Dimension for Voltmeter LSK-12C



Dimension for DM-41



Dimension for LSK-10C, 8C



Type	A	A1	A2	B	B1	C	D1	D2	E	F1	F2	G1	G2	K	weight(g)
LSK-12C	50	45	35	120	100	16	41.5	48	15	85 Φ	87Φ Hole	M4 Screw	5.5Φ Hole	15	280
LSK-10C	40	37	27	100	83	14	37.5	45.5	10	65 Φ	67Φ Hole	M3 Screw	4Φ Hole	5	180
LSK-8C	32	29.5	18.5	80	67	14	37.5	45.5	10	52 Φ	54Φ Hole	M3 Screw	4Φ Hole	5.5	150