

# Power Factor Meter (Transducer Type) - LPK

## POWER FACTOR METER <sup>(1)</sup>

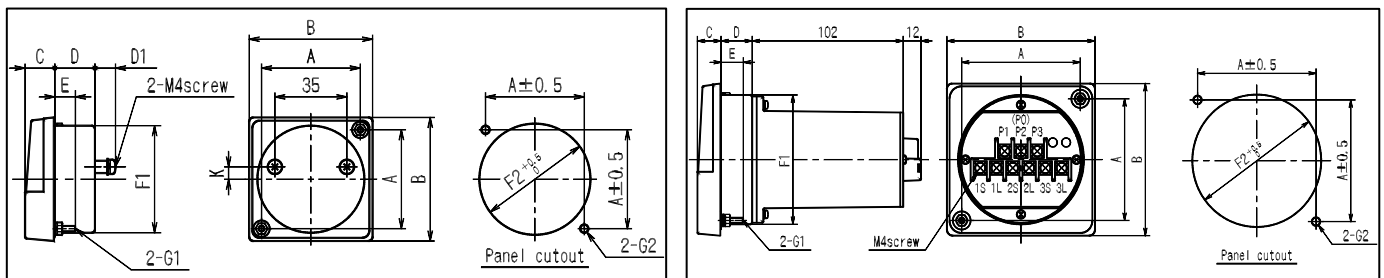
Application	Type	Rating <sup>(2)</sup>	Consumption VA		Accessory (Transducer)	
			Voltage side	Current side	10C	8C
Single phase	LPK-12NC-12 10C-12 8C-12	110V, 5A (1A) 220V, 5A (1A)	2VA	1VA	PT-62M-12 <sup>(5)</sup>	
			2VA	1VA		
3 phase (balanced)	LPBK-12NC-33 10C-33 8C-33	110V, 5A (1A) 220V, 5A (1A)	Each phase 1VA	Each phase 1VA	PBT-62M-33 <sup>(5)</sup>	
			Each phase 2VA	Each phase 1VA		
3 phase (unbalanced) <sup>(4)</sup>	LPK-12NC-33 10C-33 8C-33	110V, 5A (1A) 220V, 5A (1A)	Each phase 1VA	Each phase 1VA	PT-63M-33 <sup>(5)</sup>	
			Each phase 2VA	Each phase 1VA		
3 phase 4-wire (balanced)	LPBK-12NC-34 10C-34 8C-34	110V, 5A (1A) 220V, 5A (1A)	Each phase 1VA	Each phase 1VA	PBT-62M-34 <sup>(5)</sup>	
			Each phase 2VA	Each phase 1VA		
3 phase 4-wire (unbalanced) <sup>(3)(4)</sup>	LPK-12C-34 10C-34 8C-34	110V, 5A (1A) 220V, 5A (1A)	Each phase 1VA	Each phase 1VA	PT-64M-34 <sup>(5)</sup>	
			Each phase 2VA	Each phase 1VA		

**Note:**

- <sup>(1)</sup> Standard Scale: Lead0.5~1~Lag0.5.  
Scale for 3 phase 3-wire balance only: Lead0~1~Lag0.  
(Effective measuring range: Lead0.3~1~Lag0.3 also can be manufacture)  
Please specify frequency (50Hz or 60Hz) for all type except 3 phase balanced circuit.
- <sup>(2)</sup> Please use external CT, 5A (1A) or VT, 110V respectively if above rating is exceeds.  
Usable voltage range: 110V: 90~130V & 220V: 180~260V  
Please use in positive phase sequence.
- <sup>(3)</sup> All type for LPK-12C, 10C, 8C-34 will attached with PT-64M-34 (diagram please refer to page 20).
- <sup>(4)</sup> 3 phase (unbalanced), 3 phase 4-wire (unbalanced) is voltage balanced.
- <sup>(5)</sup> Refer to next page for the connection diagram.

**Dimensions**

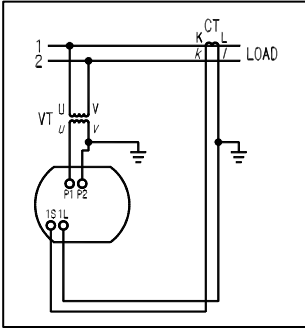
For LPBK-12N



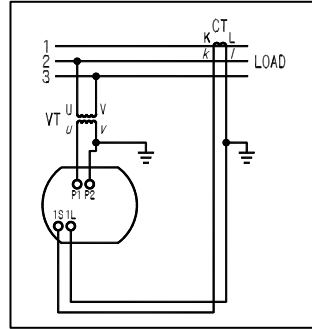
Type		A	A1	A2	B	B1	C	D	E	F1	F2	G1	G2	K	weight (g)
LPK-10C	LPBK-10C	40	37	27	100	83	14	29.5	10	65 Φ	67ΦHole	M3 Screw	4Φ Hole	5	880
LPK-8C	LPBK-8C	32	29.5	18.5	80	67	14	29.5	10	52 Φ	54ΦHole	M3 Screw	4Φ Hole	5.5	900

# Power Factor Meter (Transducer Type) - LPK

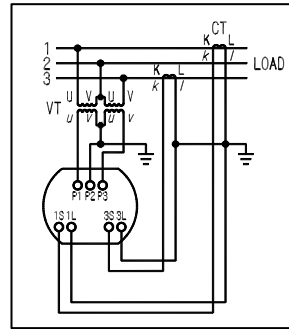
## Connection Diagram (All-in-one Transducer Type)



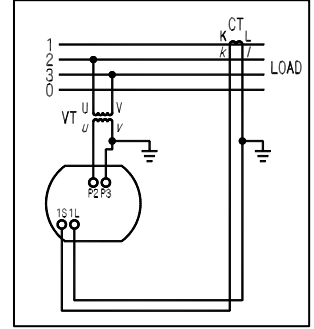
Single Phase  
Power Factor Meter



3 phase 3-wire  
Power Factor Meter  
(Balanced)

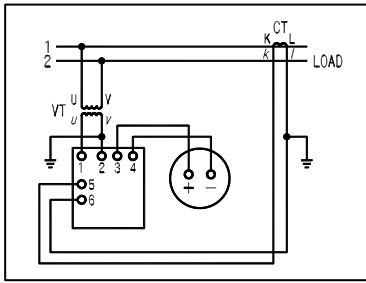


3 phase 3-wire  
Power Factor Meter  
(Unbalanced)

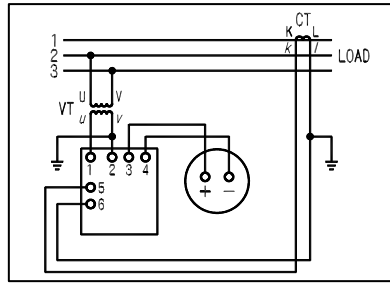


3 phase 4-wire  
Power Factor Meter  
(Balanced)

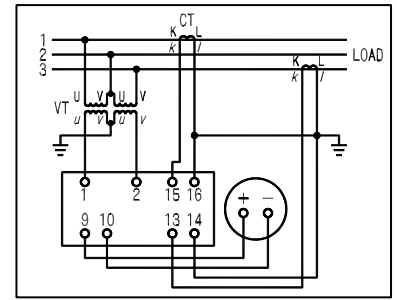
## Connection Diagram (External with Transducer Type)



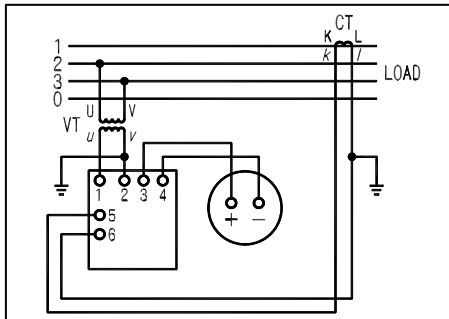
Single Phase Power Factor Meter  
External PT-62M-12



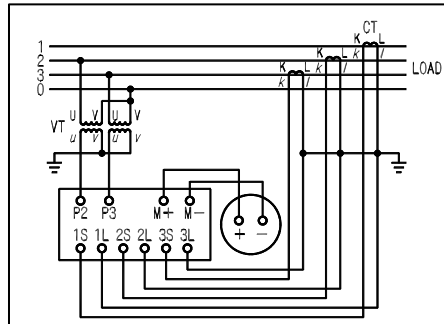
3 Phase Balanced Power Factor Meter  
External PBT-62M-33



3 Phase Unbalanced Power Factor Meter  
External PT-63M-33



3 Phase 4-wire (balanced)  
Power Factor Meter  
External PBT-62M-34

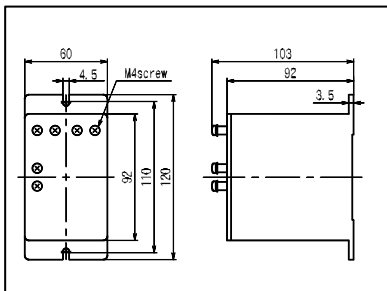


3 Phase 4-wire (unbalanced)  
Power Factor Meter  
External PT-64M-34

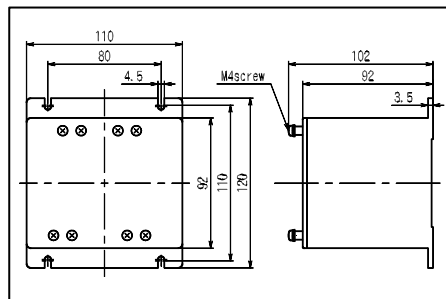
**Note:**

Error maybe observed if  
phase sequence is wrong.

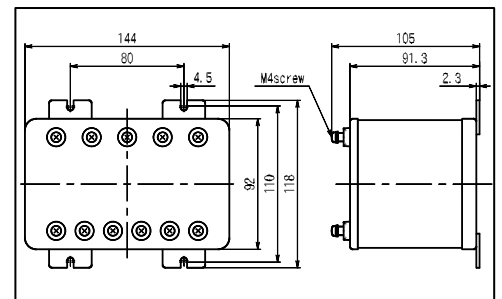
## Dimension For Attachment Transducer



□T-62M□-□



PT-63M-33



PT-64M-□