

# DC Ammeter (Moving Coil Type) - LMK

## AMMETER

Max. Scale Value	Approx. Internal Resistance or Voltage Drop	Accessory	
	LMK-12C, 10C, 8C		
25μA	2.26kΩ	-	
50μA	1.3kΩ		
100μA <sup>(1)</sup>	2.1kΩ		
200μA	1kΩ		
500μA	240Ω		
1mA	120Ω		
2mA	11Ω		
5mA	12Ω		
10mA	3.2Ω		
20mA	2.8Ω		
50mA~30A	60mV		
30A~10kA	60mV <sup>(2)</sup>		Shunt <sup>(3)</sup>

**Note:**

<sup>(1)</sup> LMK-12C: Internal resistance is 1.1kΩ when 100μA

<sup>(2)</sup> Please use external shunt (60mV) for scale value 30A or more. Shunt 50mV & 100mV also can manufacture.

<sup>(3)</sup> Lead wire for shunt is not attached. Standard lead wire resistance is 0.07Ω (1.25mm<sup>2</sup>)

▶ Meter value up until 1Ω can manufacture. Please specify your value when lead wire resistance value is over 0.07Ω.

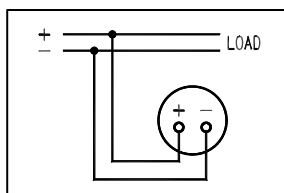
**Lead Wire Resistance Value**

Cross Section (mm <sup>2</sup> )	Annealed Copper (Ω/m)	Remarks
1.25	0.0165	JIS C 3317 (HIV)
2.0	0.00924	JIS C 3307 (IV)
3.5	0.00520	Twist wire

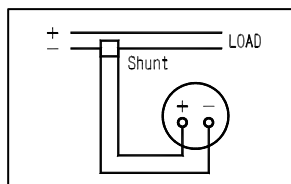
▶ Meter built-in variable resistance for external resistance correction can manufacture.

▶ Meter both deflections also can manufacture.

**Connecting Diagram**

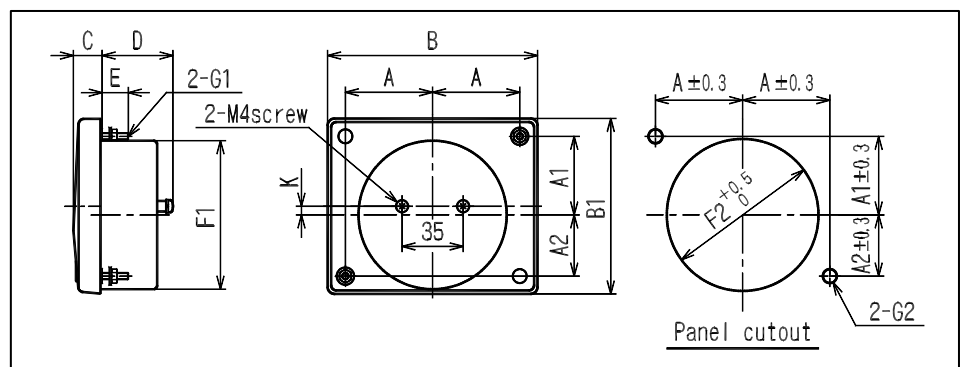


Ammeter



Ammeter external Shunt

**Dimensions**



Type	A	A1	A2	B	B1	C	D	E	F1	F2	G1	G2	K	weight (g)
LMK-12C	50	45	35	120	100	16	41.5	15	85 Φ	87ΦHole	M4 Screw	5.5ΦHole	0	300
LMK-10C	40	37	27	100	83	14	29.5	10	65 Φ	67ΦHole	M3 Screw	4ΦHole	5	140
LMK-8C	32	29.5	18.5	80	67	14	29.5	10	52 Φ	54ΦHole	M3 Screw	4ΦHole	5.5	110

# DC Voltmeter (Moving Coil Type) - LMK

## VOLTMETER

Max. Scale Value	Approx. Internal Resistance or Voltage Drop	Accessory
	LMK-12C, 10C, 8C	
50mV ~ 900mV	4mA	-
1V ~ 600V <sup>(1)(2)</sup>	1mA	-
750V/1mA ~ 25kV/1mA <sup>(1)(2)</sup>	1mA	Series Resistor

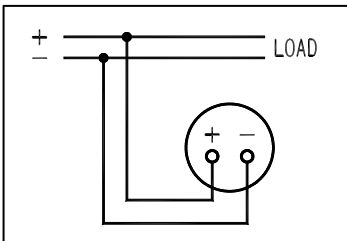
**Note:**

<sup>(1)</sup> Internal resistance up until 10kΩ/V can manufacture for voltmeter scale 3V or more.

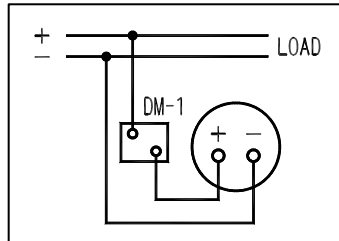
<sup>(2)</sup> Please use external series resistor (1mA) for scale value 600V or more.

- ▶ Meter both deflections can manufacture.
- ▶ Protection overvoltage for voltmeter more than 500mV also can manufacture.

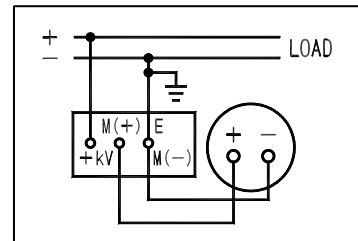
### Connection Diagram



Voltmeter

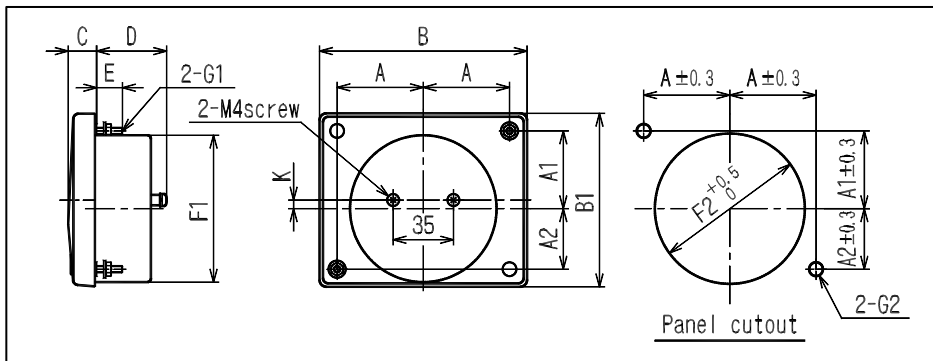


Voltmeter external with Series resistor (DM-1)



Voltmeter external with Series resistor (DM-2~25)

### Dimensions



Type	A	A1	A2	B	B1	C	D	E	F1	F2	G1	G2	K	weight(g)
LMK-12C	50	45	35	120	100	16	41.5	15	85 Φ	87ΦHole	M4 Screw	5.5ΦHole	0	300
LMK-10C	40	37	27	100	83	14	29.5	10	65 Φ	67ΦHole	M3 Screw	4ΦHole	5	140
LMK-8C	32	29.5	18.5	80	67	14	29.5	10	52 Φ	54ΦHole	M3 Screw	4ΦHole	5.5	110