

AC Ammeter (Rectifier Type) - CF

AMMETER

Max. Scale Value	Approx. Internal Resistance or Consumption VA	Accessory
	CF-17, 15, 10	
200μA	4.5kΩ	—
500μA	1.5kΩ	
1mA	800Ω	
2mA	500Ω	
5mA ⁽²⁾	300Ω	
10mA ~ 300mA ⁽²⁾	0.5VA	
350mA ~ 10A	1VA	
15A ~ 30A	1VA	MR-CTN
35A ~ 100A ⁽¹⁾	1VA	MR-CTN

Note:

⁽¹⁾ When 100A or 600V circuit voltage is exceeds, please external current transformer (CT) to meter 5A (0.1A, 1A).

⁽²⁾ External overcurrent protection to ammeter 300mA or less also can be manufacture.

- ▶ Extended scale meter also can be manufacture. (External with AT-62M, input until 15A only)
- ▶ For high-frequency ware, can be manufacture until 10 kHz. Please specify it.

For Cycle Control Wareform Meter

Please use cycle control for cycle control wareform type. (Type Name: CTF-□-□, External with AT-62MEC)

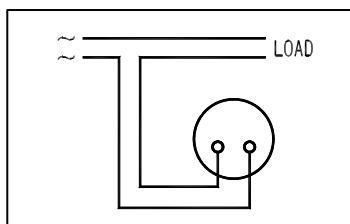
For Distorted Wareform Meter (Approx. RMS value rectifier menthod)

Keep in mind please, that standard rectifier type will affected by waveform distortion.

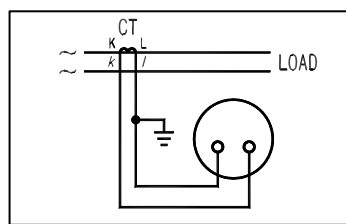
Please use approx. RMS value rectifier method for third harmonics mixed with waveform and SCR waveform.

(Type Name: CTF-□-□, External with AT-62ME)

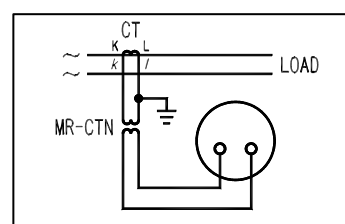
Connection Diagram



Ammeter



Ammeter with CT or MR-CTN



Ammeter with CT and MR-CTN

Current (A)	d
30~70	Φ 6.5
75~100	Φ 8.5

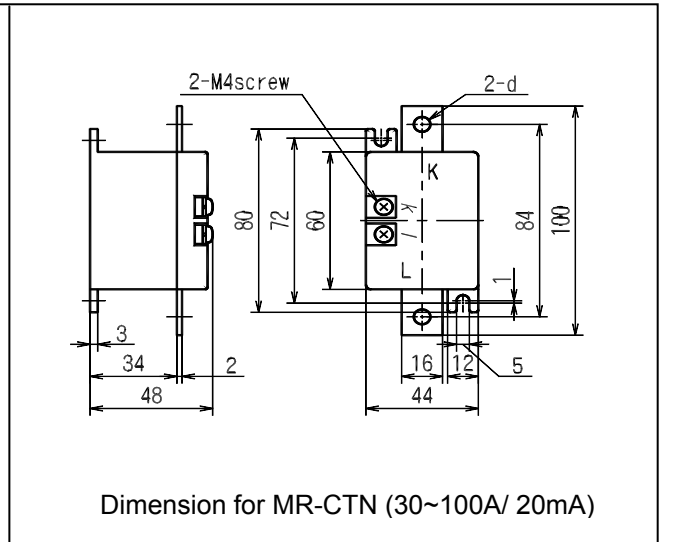
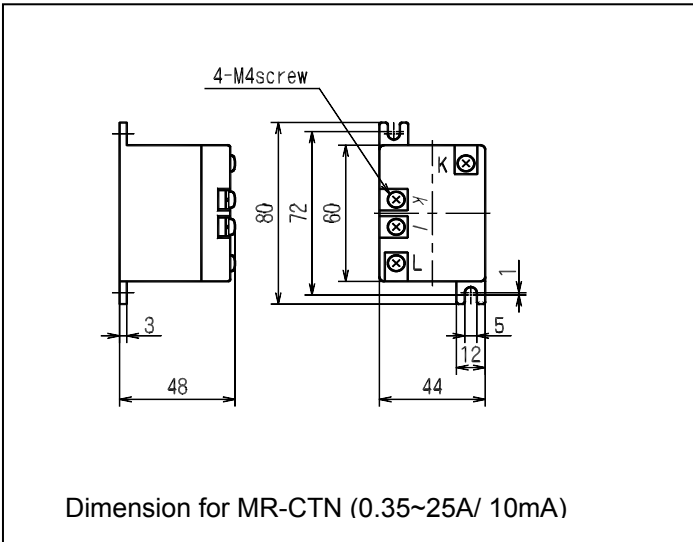
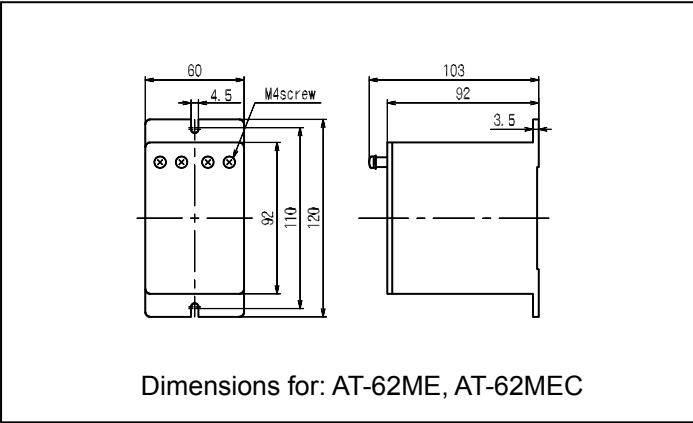
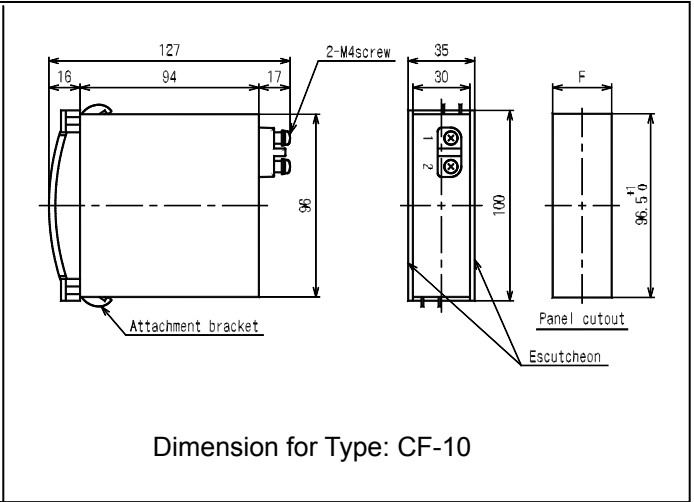
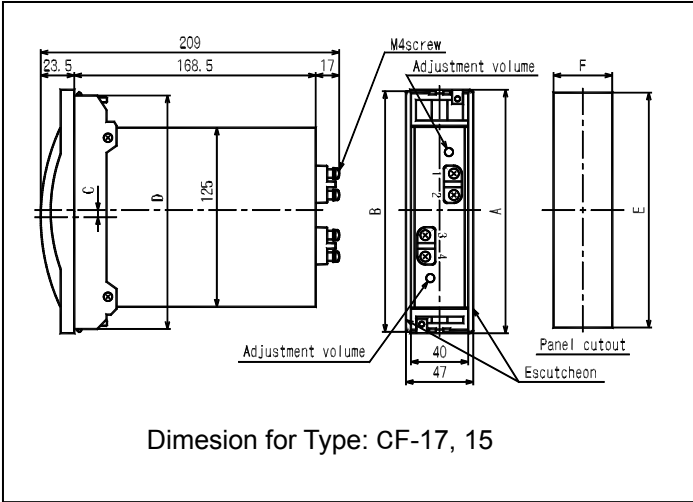
Type	A	B	C	D	E	F		Weight (g)	
						1 unit	2-unit or above	1 pointer	2-pointer
CF-17	168	170	4	163	164 ± 0.5	41 ⁺¹ / ₋₀	(41 × n) ⁺¹ / ₋₀	400	500
CF-15	148	150	0	145	146 ± 0.5	41 ⁺¹ / ₋₀	(41 × n) ⁺¹ / ₋₀	400	500

Please assemble the meter in the center of the panel if you need continuous assemble.
Or please contact and discuss with us if you need to continuous assemble more than 10 units.

* n = unit of meter

AC Ammeter (Rectifier Type) - CF

Dimension



Voltmeter (Rectifier Type) - CF

VOLTMETER

Max. Scale Value	Consumption Current	Accessory
	CF-17, 15, 10	
3V~25V	1mA	—
30V~600V	1mA	
750V~25kV ⁽¹⁾	1mA	Series resistor

Note:

⁽¹⁾ When 600V is exceeded, series resistance will external to meter 1mA.
Please refer the size on Instrument accessory separately sheet.

► For high-frequency ware, can be manufacture until 10kHz, please specify it.

For Cycle Control Wareform Meter

Please use cycle control for cycle control wareform type.

Type Name: CTF-□-□, External with VT-62MEC.

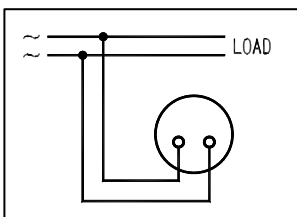
For Distorted Wareform Meter (Approx. RMS value rectifier menthod)

Keep in mind please, that standard rectifier type will be affected by waveform distortion.

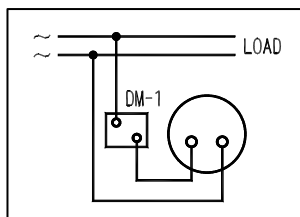
Please use approx. RMS value rectifier method for third harmonics mixed with waveform and SCR waveform.

Type Name: CTF-□, External with VT-62ME

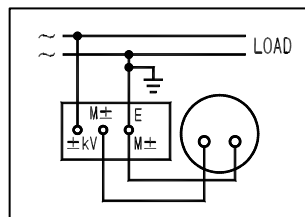
Connection Diagram



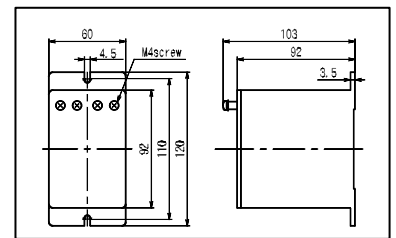
Voltmeter



Voltmeter external with series resistor (DM-1)

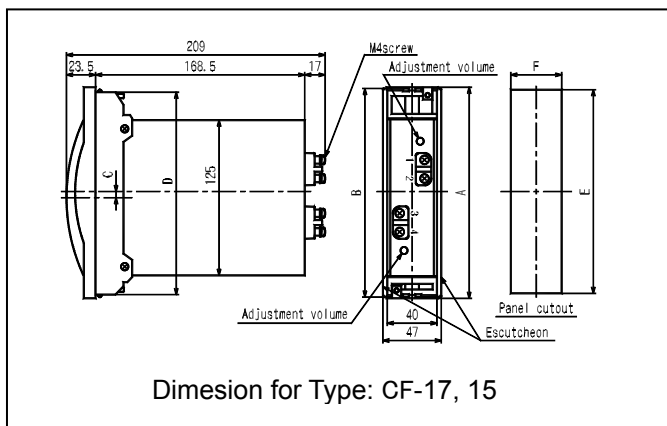


Voltmete external with series resistor (DM-2~25)

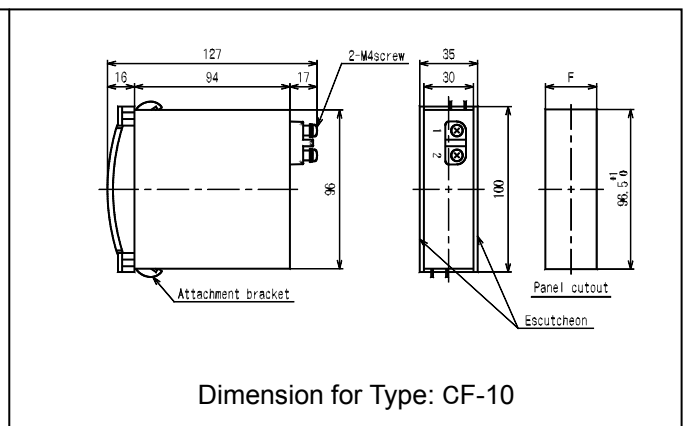


Dimensions for:
VT-62ME. VT-62MEC

Dimensions



Dimension for Type: CF-17, 15



Dimension for Type: CF-10

Type	A	B	C	D	E	F		Weight (g)	
						1 unit	2-unit or above	1 pointer	2-pointer
CF-17	168	170	4	163	164±0.5	41 ⁺¹ / ₋₀	(41×n) ⁺¹ / ₋₀	400	500
CF-15	148	150	0	145	146±0.5	41 ⁺¹ / ₋₀	(41×n) ⁺¹ / ₋₀	400	500

Please assemble the meter in the center of the panel if you need continuous assemble.
Or please contact and discuss with us if you need to continuous assemble more than 10 units.

* n = unit of meter